



# COMPLIANCE MANAGER<sup>TM</sup>

by RapidFireTools<sup>®</sup>

## INSTALLATION GUIDE

Scan Server for Compliance Manager

# Contents

---

<b>Before Using this Guide!</b> .....	<b>3</b>
<b>Purpose of this Guide</b> .....	<b>4</b>
<u>Compliance Manager Server System Requirements</u> .....	5
<u>Compliance Manager Server Firewall Requirements</u> .....	6
<b>Compliance Manager Server Installation Procedures</b> .....	<b>7</b>
<u>Step 1 — Download and Install Compliance Manager Server on Client Network</u> .....	7
<u>Step 2 — Set Up Compliance Manager Server on Client Network</u> .....	9
<u>After Installation: Continue Compliance Manager Set Up</u> .....	14
<u>Uninstall Compliance Manager Server</u> .....	16

## Before Using this Guide!



Before continuing, be sure that you have reached the **Install Appliance** task in your Compliance Manager Assessment To Do List. Before installing the Appliance, you must have set up your Site within the RapidFire Tools Portal.

See the Compliance Manager documentation at <https://www.rapidfiretools.com/cm> for more information.

**Important:** In order to install the appliance, you will also need **valid login credentials** for the RapidFire Tools account for which you wish to install the appliance.

# Purpose of this Guide

This guide is intended for users of the **Compliance Manager Server** for Compliance Manager. The Compliance Manager Server is a Windows application that you will install on a PC on the target network.

The instructions here will guide you through the installation process. Additional guides are available for Compliance Manager. This guide is designed to be used in conjunction with other supplementary guides available at <https://www.rapidfiretools.com/cm>.

## Compliance Manager Server System Requirements

Below you can find the minimum requirements for the Compliance Manager Server:

Compliance Manager Server Type	Cyber Hawk	Compliance Manager	Reporter
Minimum Requirements	<ul style="list-style-type: none"><li>• Intel i5 processor</li><li>• Windows 10 Pro or Windows 2016 Server and up</li><li>• 2 GB Available RAM</li><li>• 5 GB Disk Space</li><li>• Network connectivity/Internet access</li></ul>	<ul style="list-style-type: none"><li>• Intel i5 processor</li><li>• Windows 10 Pro or Windows 2016 Server and up</li><li>• 2 GB Available RAM</li><li>• 5 GB Disk Space</li><li>• Network connectivity/Internet access</li></ul>	<ul style="list-style-type: none"><li>• Intel i5 processor</li><li>• Windows 10 Pro or Windows 2016 Server and up</li><li>• 4 GB Available RAM</li><li>• 10 GB Disk Space</li></ul> <p>Recommendation: +1 GB per client Site</p> <ul style="list-style-type: none"><li>• Network connectivity/Internet access</li></ul> <div><b>Important:</b> Reporter is installed on the MSP network - NOT the client network.</div>

**Important:** You can only install **one** RapidFire Tools server/appliance on a PC or endpoint at a time. If you need to install multiple server(s)/appliance(s), install each one on a separate endpoint on the network.

## Compliance Manager Server Firewall Requirements

IT admins and end customers using RapidFire Tools servers/appliances should configure the firewall rules on their networks to enable access to the following RapidFire Tools URLs.

- gatekeeper.rapidfiretools.com
- go.rapidfiretools.com
- au.rapidfiretools.com
- go-eu.rapidfiretools.com
- go-au.rapidfiretools.com
- wcflb.rapidfiretools.com
- wcflb-eu.rapidfiretools.com
- wcflb-au.rapidfiretools.com
- api.ndglue.com
- networkdetective.s3.amazonaws.com
- download.rapidfiretools.com

The RapidFire Tools Server and Discovery Agent requires access to **port 443**.

The Virtual Appliance requires access to the Greenbone Community Feed at `feed.community.greenbone.net` using **port 873**.

# Compliance Manager Server Installation Procedures

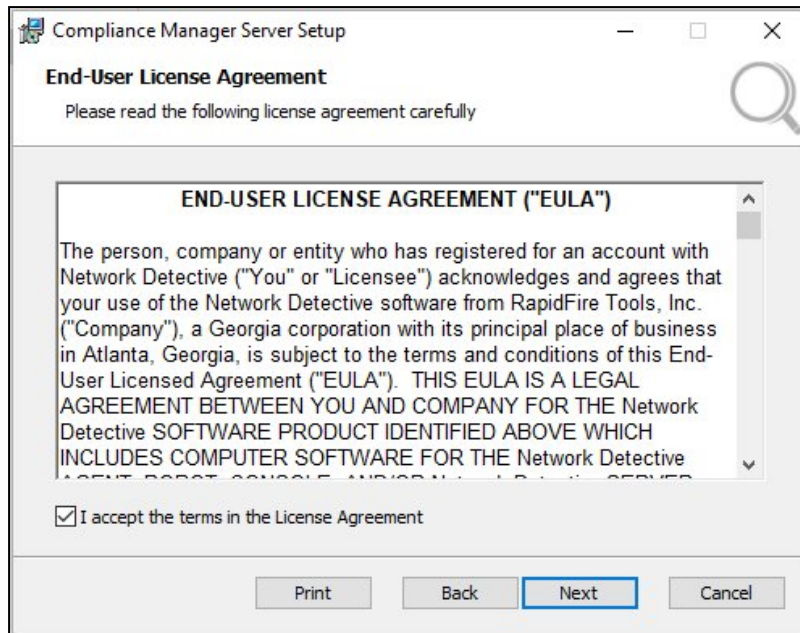
To install the Compliance Manager Server, follow these steps:

**Important:** You will need RapidFire Tools login credentials in order to install the Compliance Manager Server.

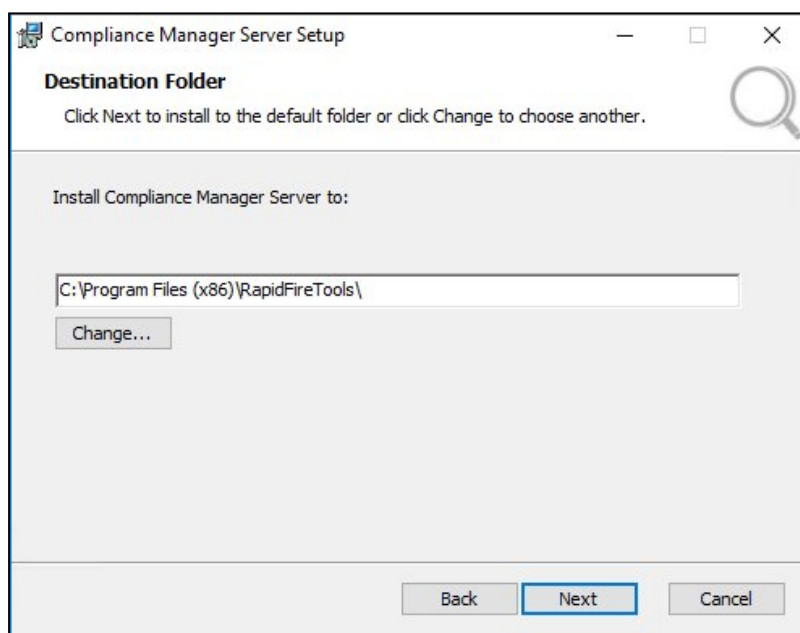
**Note:** The Compliance Manager Server is installed on the network at the client's site.

## Step 1 — Download and Install Compliance Manager Server on Client Network

1. Visit the RapidFire Tools software download website at <https://www.rapidfiretools.com/cm> to download and run the **Compliance Manager Server Installer** file. The **Installer** file is named **ComplianceManagerServerSetup.msi**.
2. After downloading the **Installer**, **Run** the **Installer** to start the installation process.
3. After the Welcome Screen is displayed, click **Next** button to continue the installation process.
4. Accept the terms of the **End User License Agreement** and click **Next**.

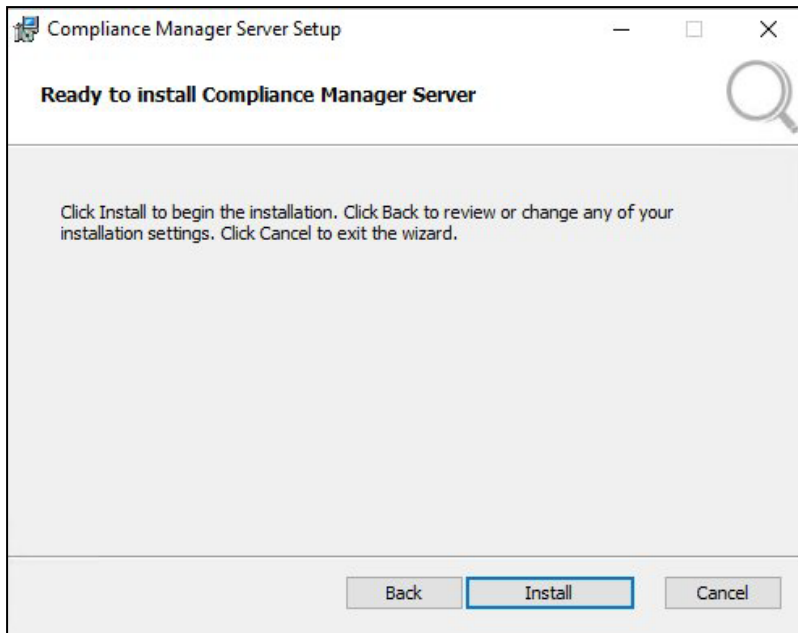


5. Accept the default **Destination Folder** location for the Compliance Manager Server's installation. Click **Next**.

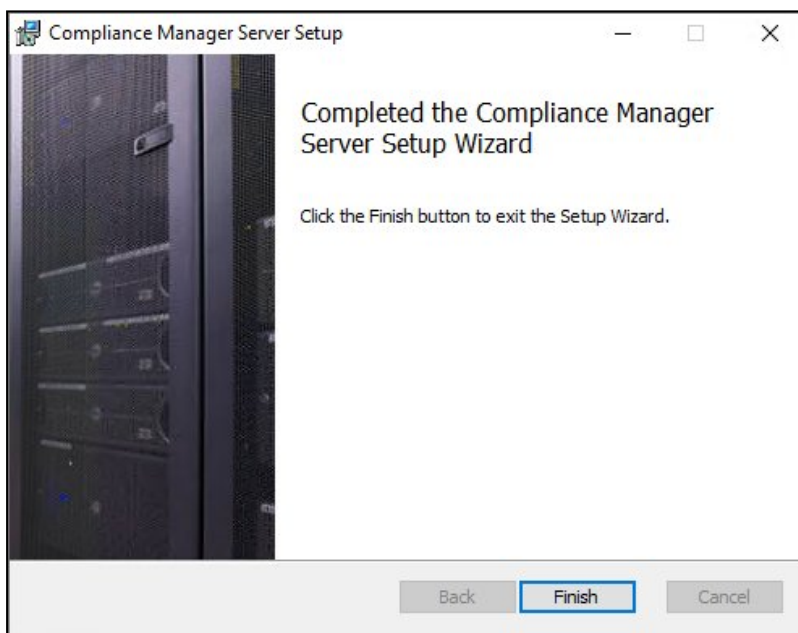


6. Click **Install** button to proceed with the installation and set up of the **Compliance Manager Server**.



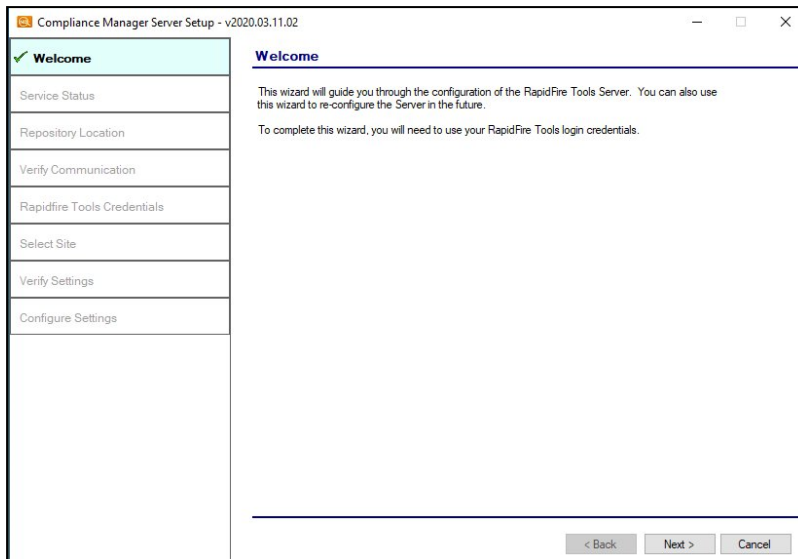


7. When the install is complete, click **Finish**.

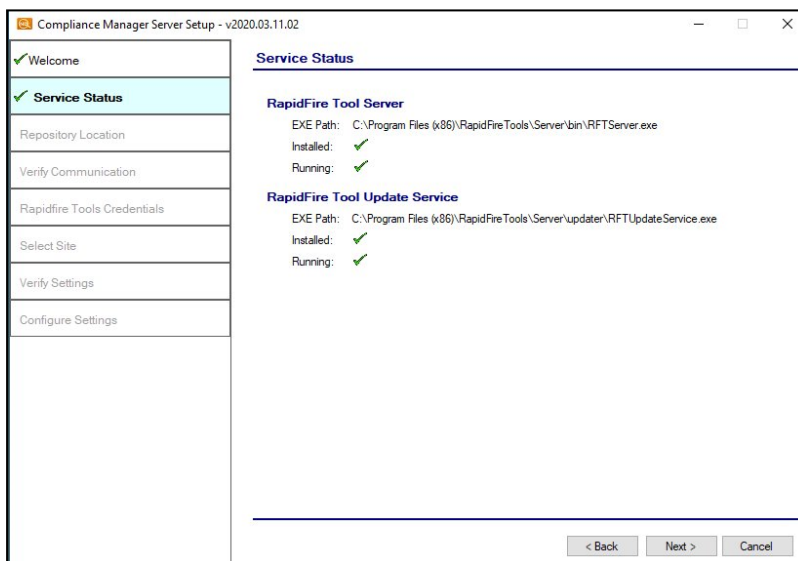


## Step 2 — Set Up Compliance Manager Server on Client Network

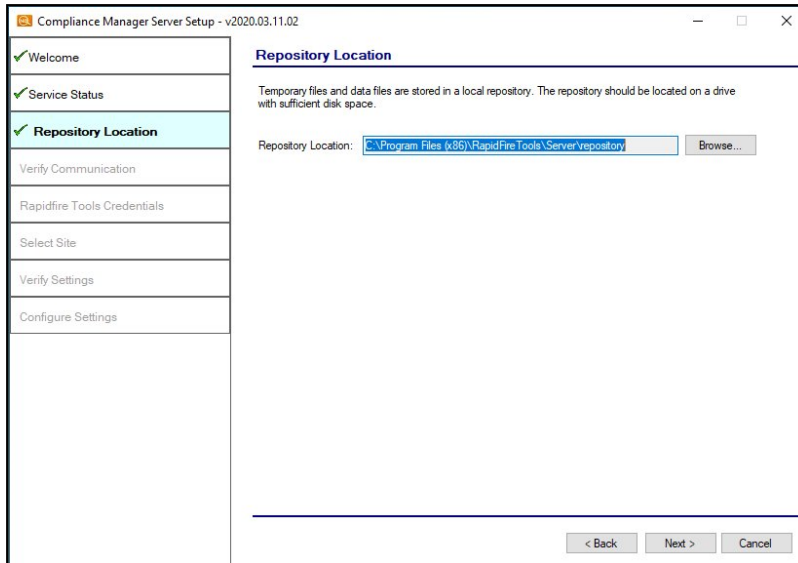
1. When the install is complete, the Compliance Manager Server setup window will then appear. Click **Next**.



2. During this step, the **Compliance Manager Server** and **Service Updater** programs will be installed. Once the Installer confirms the installation of each program, click **Next**.

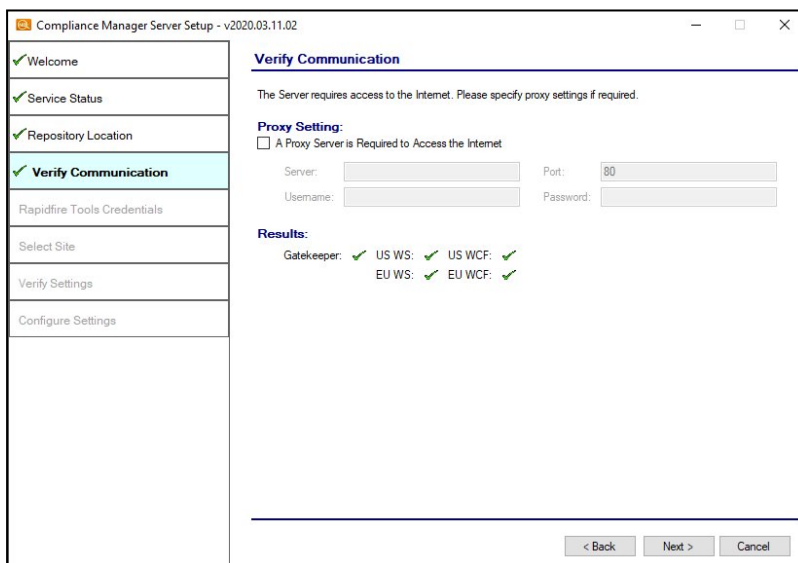


3. Select a location for the Compliance Manager Server Repository. Be sure the drive you select has sufficient drive space.



4. In this step, the Compliance Manager Server will verify that the computer that will host the data collector can communicate with the RapidFire Tools web and file transfer services. Click **Next**.

**Note:** If you are using a proxy server, enter the required credentials and connection information.



**Important:** If the Compliance Manager Server is unable to communicate with one or more services, be sure you have met the ["Compliance Manager Server Firewall Requirements" on page 6](#).

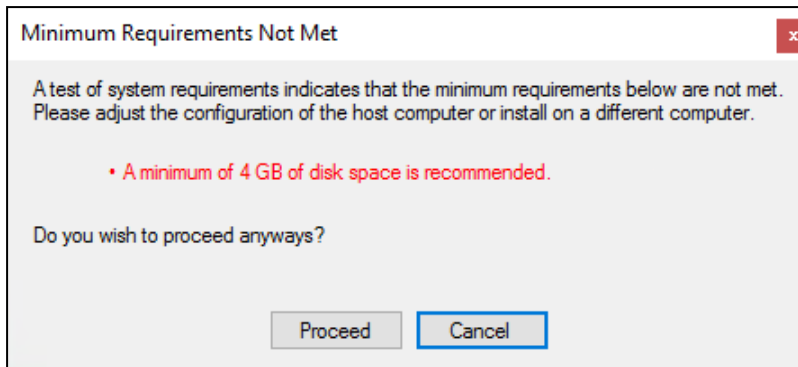
- Next you will need to link the Compliance Manager Server to your chosen Site. To do this, first enter your RapidFire Tools credentials and click **Next**.

The screenshot shows the 'Compliance Manager Server Setup - v2020.03.11.02' window. On the left, a sidebar lists the setup steps: Welcome, Service Status, Repository Location, Verify Communication, **Rapidfire Tools Credentials** (highlighted), Select Site, Verify Settings, and Configure Settings. The main area is titled 'Rapidfire Tools Credentials' and contains the instruction: 'Enter your credentials below to retrieve a list of available Appliance IDs.' Below this are two input fields: 'Username:' and 'Password:'. At the bottom right, there are three buttons: '< Back', 'Next >', and 'Cancel'.

- Scroll through the list of **Compliance Manager Sites** associated with your RapidFire Tools account. Select the **Site** for which you want to install an appliance. Click **Next**.

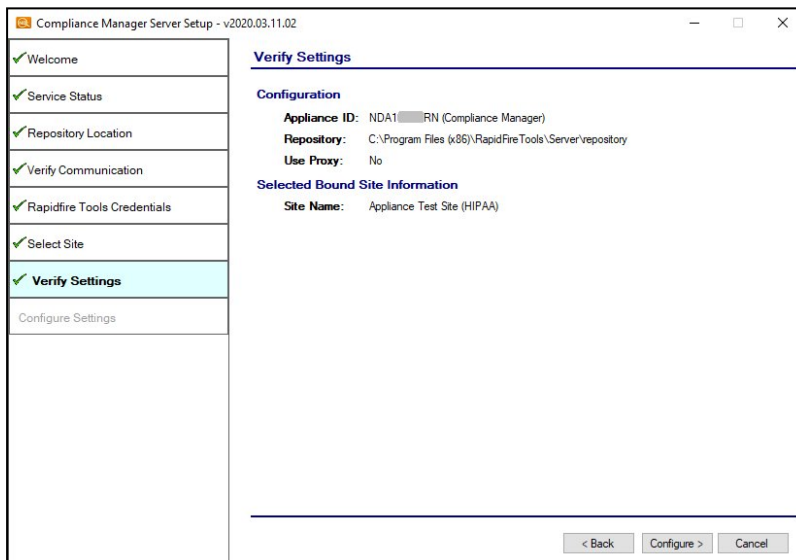
The screenshot shows the 'Compliance Manager Server Setup - v2020.03.11.02' window. The sidebar on the left now highlights 'Select Site'. The main area is titled 'Select Site' and contains the instruction: 'Select the Site to bind this appliance. The Site should exist before installing the appliance. If no Sites are available, please have your Compliance Manager administrator create a Site for use with this appliance.' Below this is a list box titled 'Available Sites' which contains one entry: 'Appliance Test Site (HIPAA)'. Below the list box is a checkbox labeled 'Enable automatic updates for the Virtual Appliance.' which is checked. At the bottom right, there are three buttons: '< Back', 'Next >', and 'Cancel'.

A **Minimum Requirements Not Met** warning will appear if the installer detects that disk or RAM requirements are not met. You can choose to override the requirements and **Proceed**, or click **Cancel**.

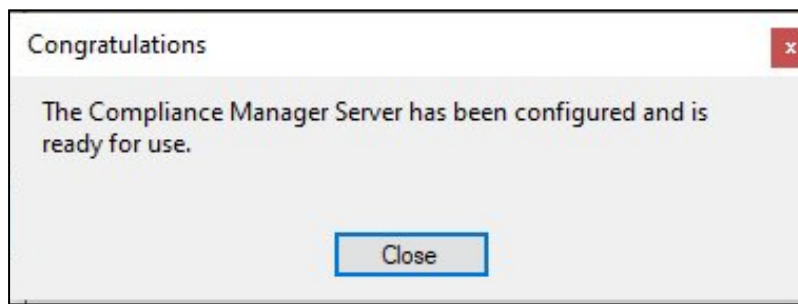
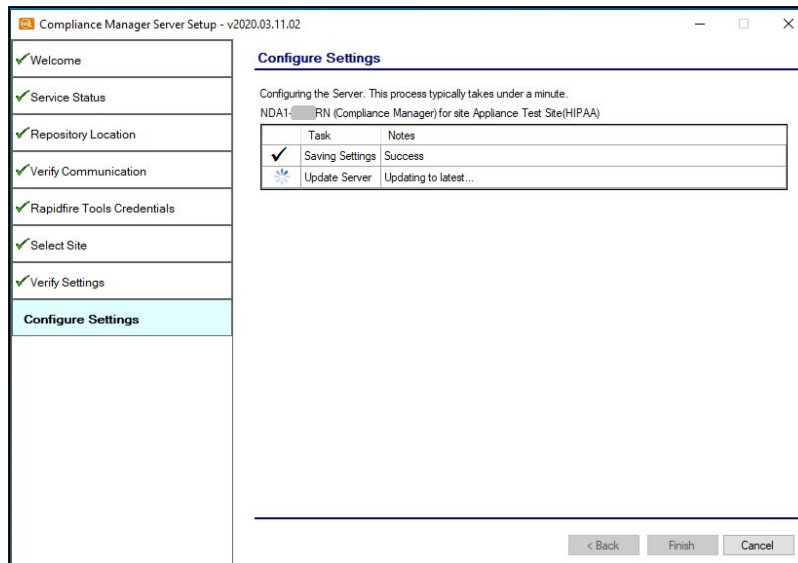


**Note:** See ["Compliance Manager Server System Requirements" on page 5](#) for specific requirement information.

7. Review the **Compliance Manager Server's** configuration settings and verify they are correct.



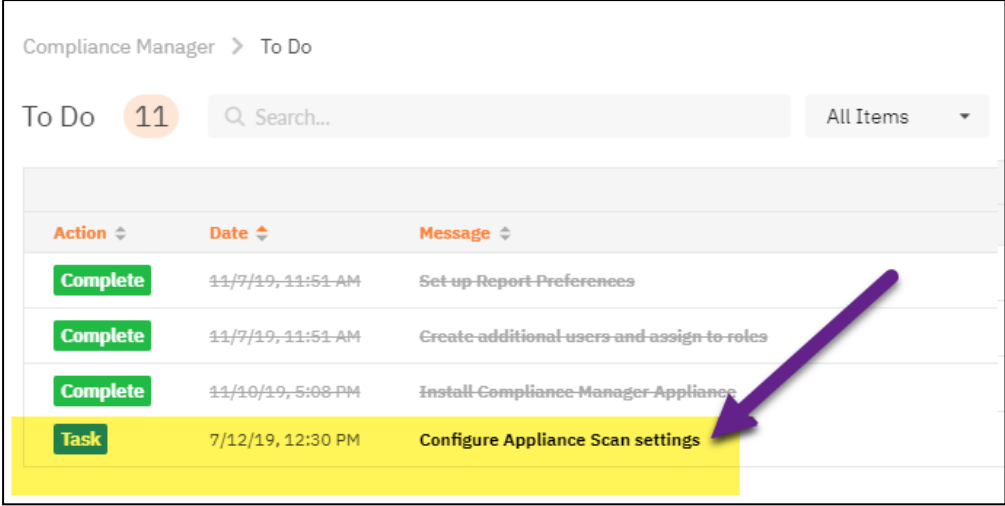
8. Select the **Back** button to correct any configuration issues, or click **Next** to finalize the setup.
9. After the **Compliance Manager Server** application is set up, you will be notified that the Compliance Manager Server is ready for use.



## After Installation: Continue Compliance Manager Set Up

1. Log in to the RapidFire Tools Portal using your credentials.
2. Access the Site To Do list that you are setting up.

**Note:** The appliance should become available within 5 to 15 minutes after a successful RapidFire Tools Server installation. When the Compliance Manager appliance becomes available (after checking into the RapidFire Tools Portal), the Install Appliance task will automatically be marked complete.



Compliance Manager > To Do

To Do 11 Search... All Items ▾

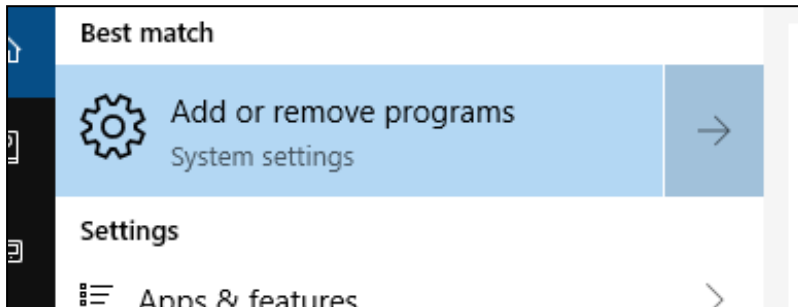
Action ▾	Date ▾	Message ▾
Complete	11/7/19, 11:51 AM	Set up Report Preferences
Complete	11/7/19, 11:51 AM	Create additional users and assign to roles
Complete	11/10/19, 5:08 PM	Install Compliance Manager Appliance
Task	7/12/19, 12:30 PM	Configure Appliance Scan settings

3. Continue to **Configure Appliance Scan Settings** using the Compliance Manager User Guide available at <https://www.rapidfiretools.com/cm>.

## Uninstall Compliance Manager Server

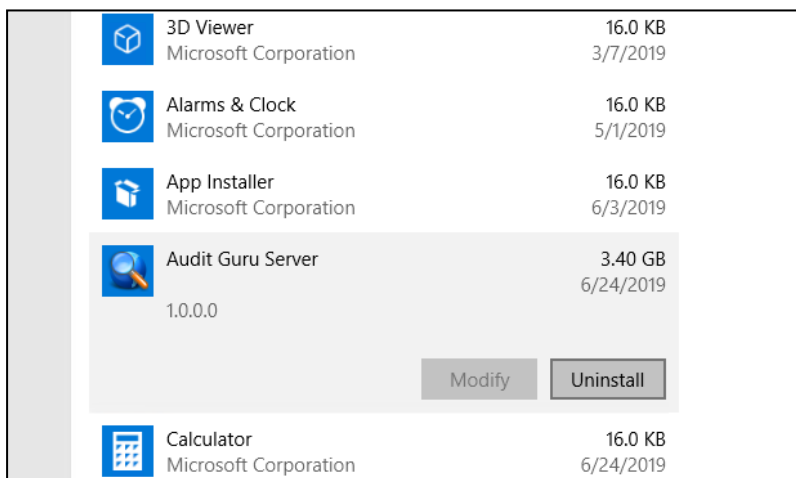
To uninstall Compliance Manager Server, follow these steps:

1. On the computer that is hosting the server, go to **Start > Add or Remove Programs**



2. Find the Server and click **Uninstall**.

**Tip:** The Server may be called "Audit Guru Server", "RapidFire Tools Server," or "Compliance Manager Server" depending on the product you are using.



3. Confirm that you wish to uninstall the Server.

The appliance will then be removed.

**Note:** To reinstall an appliance for a site, you will need assistance from RapidFire Tools support. See [Re-provision Compliance Manager GRC Server](#).